

Social Drivers of Health in Value-Based Care

Panel:

Whitney Zahnd, PhD, University of Iowa and RUPRI Center for Rural Health Policy Analysis

Jeannie Davis, EdD, Western University of Health Sciences

Jim Whelan, MD, Clinically Integrated Network and Northern Michigan Care Partners



National Rural Health Association Health Equity Conference

Rural Health Value

Goals

- To facilitate rural health care organization and community transitions from volume-based to value-based health care and payment.
- To engage and educate payers regarding *rural* value-based health care and payment perspectives.

Rural Health Value's charge

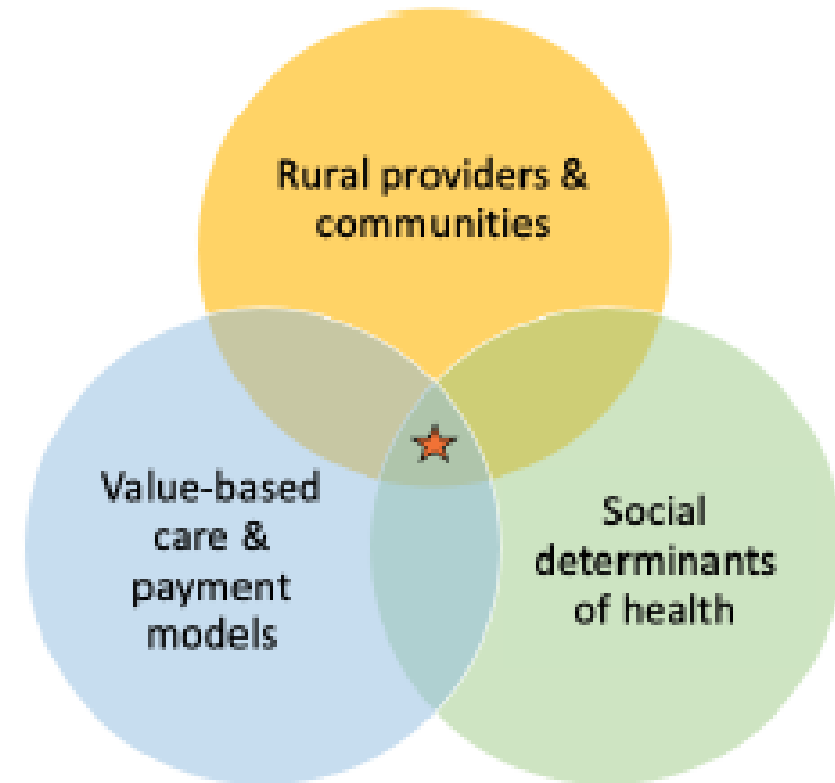
- Convene groups interested in rural value-based care and payment to synthesize and share insights to inform value-based care (VBC) and value-based purchasing (VBP).
- Develop actionable tools and resources to support rural VBC.
- Interpret health policy related to rural health care value.
- Spotlight and disseminate rural best practices in VBC.
- Share rural experiences delivering VBC.

www.ruralhealthvalue.org



RHV Summit: Driving Value Through Community-Based Partnerships

- Virtual summit held in Summer 2023 to bring together community and health care leaders in small group discussion to share insights, innovations, successes, and challenges:
 - Health-related social needs screening and referral processes
 - The design and structure of collaborative activities between health care and community-based organizations
 - Partnerships and financial incentives, particularly between health care and community-based organizations
- Four participating communities:
 - **Northern Michigan Community Health Innovation Region**
 - **Coast to the Cascades Community Wellness Network**
 - Mercy Health Northwest Arkansas
 - McLeod Health-Cheraw



Identified Opportunities

- Sustainable financing for activities to address health-related social needs
- Hospital positioning to play different roles in different contexts
- Mechanisms to support sharing and scaling practices involving technology to improve screening and addressing health-related social needs
- Attention to building and supporting the social needs workforce infrastructure



Questions

- Email: whitney-zahnd@uiowa.edu

Website: www.ruralhealthvalue.org

Summit Report Summary:

